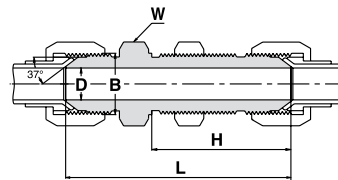
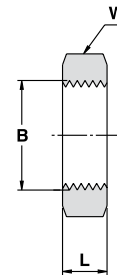


774 HFL
BULKHEAD UNION
 S.A.E. 070601



Ordering Information	Tube O.D.		B UN	D		W Hex. Flat	H		L	
	inch	mm		inch	mm		inch	mm	inch	mm
774HFL SS 3/16"	3/16	-	3/8 - 24	0.125	3.2	5/8	1.11	28.2	1.90	48.3
774HFL SS 1/4" / 6MM	1/4	6	7/16 - 20	0.172	4.4	11/16	1.20	30.5	2.07	52.6
774HFL SS 5/16" / 8MM	5/16	8	1/2 - 20	0.234	6.0	3/4	1.20	30.5	2.07	52.6
774HFL SS 3/8" / 10MM	3/8	10	9/16 - 18	0.297	7.5	13/16	1.28	32.5	2.18	55.4
774HFL SS 1/2" / 12MM	1/2	12	3/4 - 16	0.391	9.9	1	1.44	36.6	2.44	62.0
774HFL SS 5/8" / 16MM	5/8	16	7/8 - 14	0.484	12.3	1 1/8	1.58	40.1	2.74	69.6
774HFL SS 3/4" / 18MM	3/4	18	1 1/16 - 12	0.609	15.5	1 3/8	1.75	44.4	3.09	78.5
774HFL SS 7/8" / 20MM	7/8	20	1 3/16 - 12	0.719	18.3	1 1/2	1.75	44.4	3.12	79.2
774HFL SS 1" / 25MM	1	25	1 5/16 - 12	0.844	21.5	1 5/8	1.75	44.4	3.14	79.8
774HFL SS 1 1/4" / 32MM	1 1/4	32	1 5/8 - 12	1.078	27.5	1 7/8	1.80	45.7	3.31	84.1
774HFL SS 1 1/2" / 38MM	1 1/2	38	1 7/8 - 12	1.312	33.0	2 1/8	1.81	46.0	3.52	89.4
774HFL SS 2"	2	-	2 1/2 - 12	1.781	45.0	2 3/4	2.09	53.1	4.20	106.7

774 HFLN
BULKHEAD LOCKNUT
 S.A.E. 070118



Ordering Information	Tube O.D.		B UNF	W Hex. Flat		L	
	inch	mm		inch	mm	inch	mm
774HFLN SS 3/16"	3/16	-	3/8 - 24	5/8	0.22	5.6	
774HFLN SS 1/4" / 6MM	1/4	6	7/16 - 20	11/16	0.25	6.4	
774HFLN SS 5/16" / 8MM	5/16	8	1/2 - 20	3/4	0.25	6.4	
774HFLN SS 3/8" / 10MM	3/8	10	9/16 - 18	13/16	0.27	6.9	
774HFLN SS 1/2" / 12MM	1/2	12	3/4 - 16	1	0.31	7.9	
774HFLN SS 5/8" / 16MM	5/8	16	7/8 - 14	1 1/8	0.36	9.1	
774HFLN SS 3/4" / 18MM	3/4	18	1 1/16 - 12	1 3/8	0.41	10.4	
774HFLN SS 7/8" / 20MM	7/8	20	1 3/16 - 12	1 1/2	0.41	10.4	
774HFLN SS 1" / 25MM	1	25	1 5/16 - 12	1 5/8	0.41	10.4	
774HFLN SS 1 1/4" / 32MM	1 1/4	32	1 5/8 - 12	1 7/8	0.41	10.4	
774HFLN SS 1 1/2" / 38MM	1 1/2	38	1 7/8 - 12	2 1/8	0.41	10.4	
774HFLN SS 2"	2	-	2 1/2 - 12	2 3/4	0.41	10.4	

"D" Dimension is the minimum opening. Dimensions are for reference only, and are subject to change without